



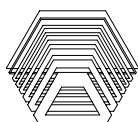
STAY CABLE SYSTEM

Issued: March 2008
UT Tensacciai
Total pages: 5

TENSACCIAI STAY CABLE SYSTEM

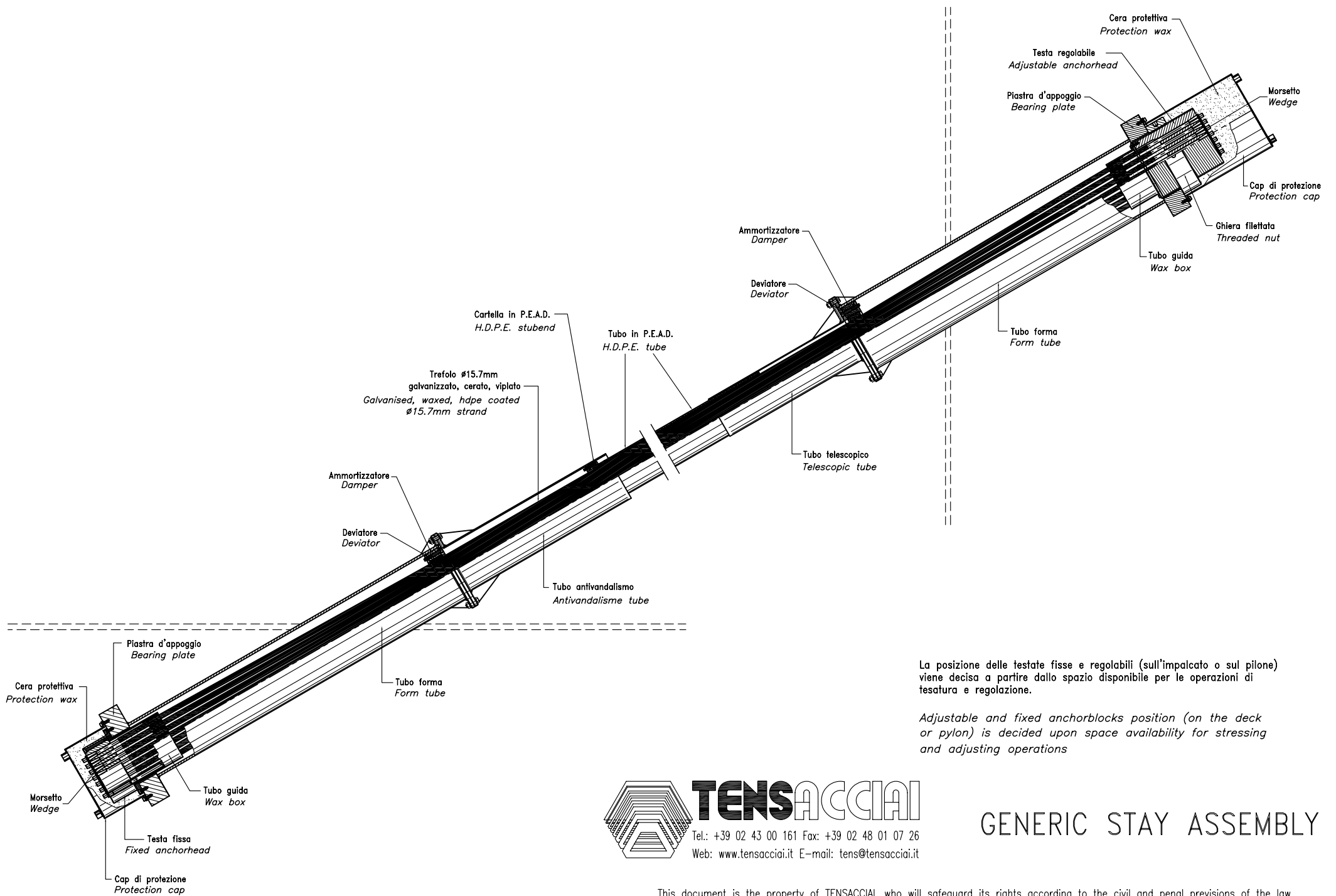
Stay cable type TSRA15	Nominal breaking load F_{pk} [kN]	Maximum working load 45% F_{pk} [kN]	Maximum tested fatigue load range (200 MPa) [kN]
Strands no.			
3	837	377	90
4	1.116	502	120
7	1.953	879	210
12	3.348	1.507	360
19	5.301	2.385	570
31	8.649	3.892	930
37	10.323	4.645	1.110
55	15.345	6.905	1.650
61	17.019	7.659	1.830
73	20.367	9.165	2.190
91	25.389	11.425	2.730
127	35.433	15.945	3.810
169	47.151	21.218	5.070

All cables made with 7-wire strands, diameter 15,7 mm (nominal cross section 150 mm²), 1860 MPa declared nominal strength, galvanised, waxed and hdpe coated.



TENSACCIAI

Tel.: +39 02 43 00 161 Fax: +39 02 48 01 07 26
Web: www.tensacciai.it E-mail: tens@tensacciai.it

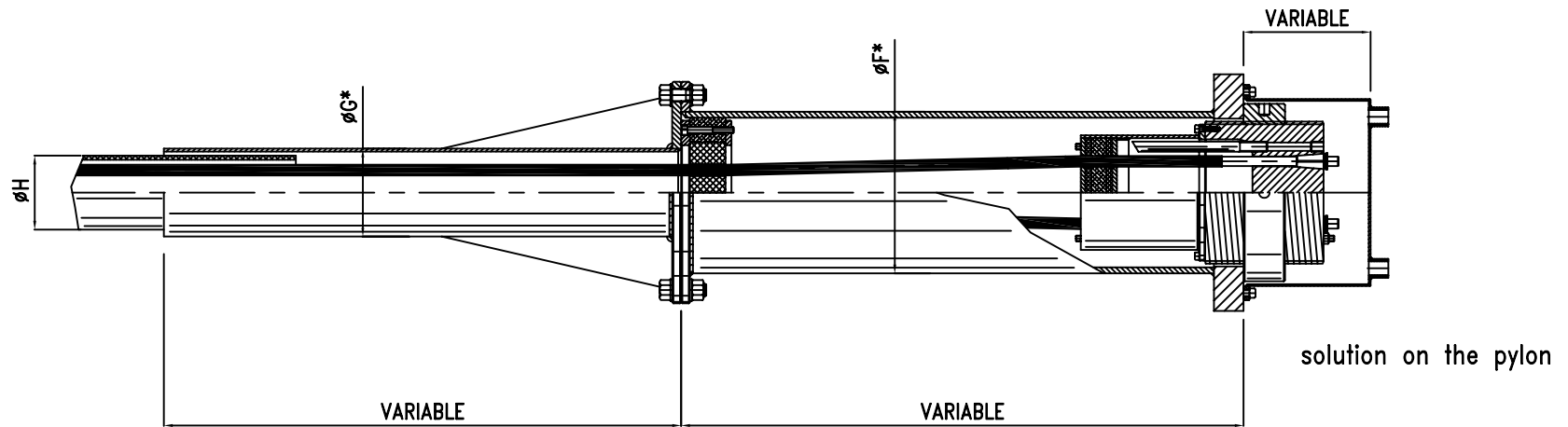


La posizione delle testate fisse e regolabili (sull'impalcato o sul pilone) viene decisa a partire dallo spazio disponibile per le operazioni di tesatura e regolazione.

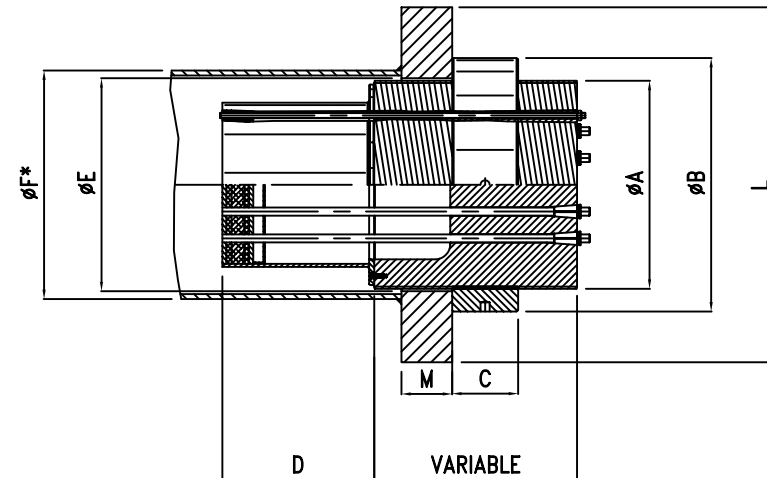
Adjustable and fixed anchorblocks position (on the deck or pylon) is decided upon space availability for stressing and adjusting operations



GENERIC STAY ASSEMBLY



N° STRANDS	A mm	B mm	C mm	D mm	E mm	F* mm	G* mm	H mm	L x L mm	M** mm
4	110	150	50	150	120	121	80	63	300	20
7	135	185	60	150	145	146	102	90	340	30
12	225	285	70	150	235	254	139.7	125	440	40
19	240	300	70	210	250	273	139.7	125	450	50
31	265	330	85	250	275	298.5	177.8	160	480	70
37	280	345	90	250	290	323.9	193.7	180	500	80
42	325	410	120	250	335	355.6	244.5	225	560	80
55	325	410	120	250	335	355.6	244.5	225	560	90
61	360	455	120	250	370	406.4	273	250	610	100
73	410	500	130	250	420	457.2	298.5	280	650	100
91	440	550	150	250	450	473.1	355.6	315	700	120
127	490	590	200	250	500	530	406.4	355	800	130
169	580	700	250	250	590	635	430	400	900	145



* Diameter to be confirmed according to the project

** If bearing on concrete surface with $f_{ck}=36\text{MPa}$, and considering 60% of ULS load



Tel.: +39 02 43 00 161 Fax: +39 02 48 01 07 26
Web: www.tensacciai.it E-mail: tens@tensacciai.it

ASSEMBLY

ADJUSTABLE ANCHORHEAD

